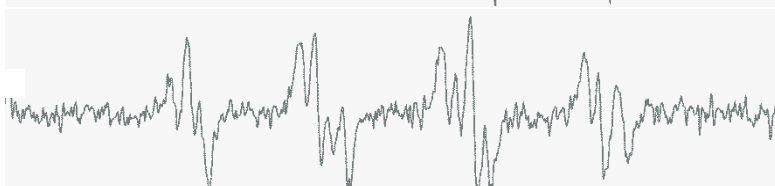
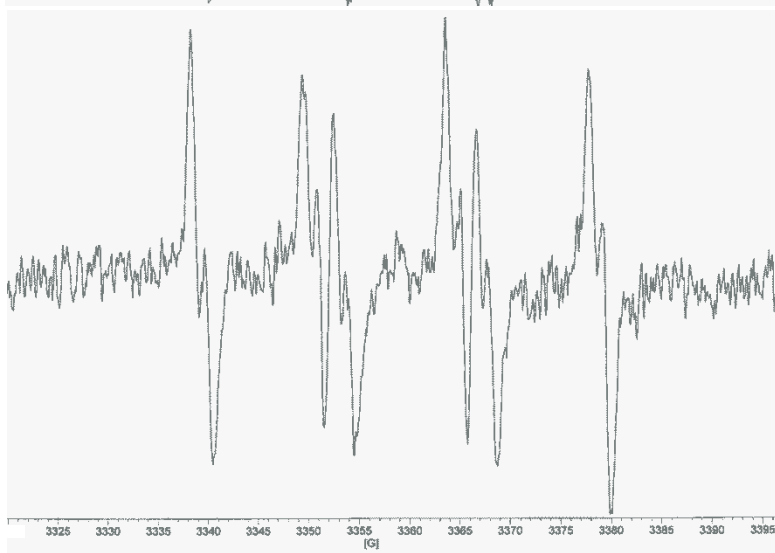


Xa + XOD +DMPO + 2% DMSO



Xa + XOD +DMPO + 2% DMSO
+ SOD 0.5 UI/mL



Xa + XOD +DMPO + 2% DMSO
+ CO-RM2 $3.8 \cdot 10^{-5} \text{M}$

3325 3330 3335 3340 3345 3350 3355 3360 3365 3370 3375 3380 3385 3390 3395
[G]